

HIGHLANDS HOUSE
HIGHLANDS, NC



THE HIGHLANDS HOUSE STORY

X

02 • NOVEMBER 17 2025



THROUGH THE SEASONS

“LIVE IN EACH SEASON AS IT PASSES; BREATHE THE AIR, DRINK THE DRINK, TASTE THE FRUIT, AND RESIGN YOURSELF TO THE INFLUENCE OF THE EARTH.” THOROUUEAU WAS NO STRANGER TO THE WONDERS OF THE NATURAL WORLD. HE OFTEN ADVOCATED FOR EMBRACING AND EXPERIENCING NATURE IN ALL OF ITS GLORY. HIS WORKS BETRAY AN UNDERSTANDING THAT BEAUTY IS NOT JUST SOMETHING TO BE SEEN, BUT THAT TO FULLY EXPERIENCE NATURE IT MUST ALSO BE HEARD, SMELLED, AND FELT.

THE HIGHLANDS COUNTRY IS UNMATCHED IN BEAUTY AND, NO MATTER THE SEASON, HAS SOME WEALTH OF EXPERIENCE TO OFFER. HIGHLAND HOUSE WILL BE A MIRROR, REFLECTING THE SURROUNDINGS WHILE TAKING EACH GUEST ON A SENSORY JOURNEY. BORROWING MOTIFS FROM THE FOUR SEASONS OUR STORY WILL START IN SPRING: A CERUSED WOOD LINED LOBBY AND CAFE FILLED WITH NATURAL PLANTS WILL WELCOME GUESTS. AS IN LIFE, SPRING WILL GIVE WAY TO SUMMER. LIGHT WALLS WITH WARM LINEN WALLCOVERINGS, A STONE FIREPLACE THAT CONNECTS DIRECTLY TO THE OUTSIDE, AND AS MANY SHEER LINED WINDOWS AS WE CAN HAVE, WILL WRAP THE MAIN BAR, AS INVITING AS THE SUNNY RAYS OF SUMMER. ONCE IN THE LOUNGE, GUESTS WILL FEEL THE WARMTH OF OAK LIKE A WELCOMING FALL HUG, FLOOR TO CEILING PANELS THAT YOU CAN ALMOST SMELL WILL SURROUND THE ROOM WHILE A LARGE CENTRAL FIREPLACE WILL OFFER WARMTH IN ALL FOUR DIRECTIONS. FINALLY, THE LIVING ROOM, WITH ITS DARK WALLS AND GLOWING LIGHTS WILL BECKON TO GUESTS - INVITING THEM TO LOSE THEMSELVES IN REVERIE BEFORE THE CRACKLING FIRE. THE ROOMS WILL BE AN EXTENSION OF HOME - WITH RESIDENTIAL PAINTED LAP BOARD ENTRIES, SPACIOUS BATHROOMS WITH MURALS THAT INSPIRE, AND NATURAL WOOD TOUCHES IN THE BEDROOM. HIGHLAND HOUSE WILL ENCOURAGE GUESTS TO SLOW DOWN AND EXPERIENCE THE SEASONS, AND ALL THE BEAUTY THEY HAVE TO OFFER.



PUBLIC
SPACES

08 LOBBY



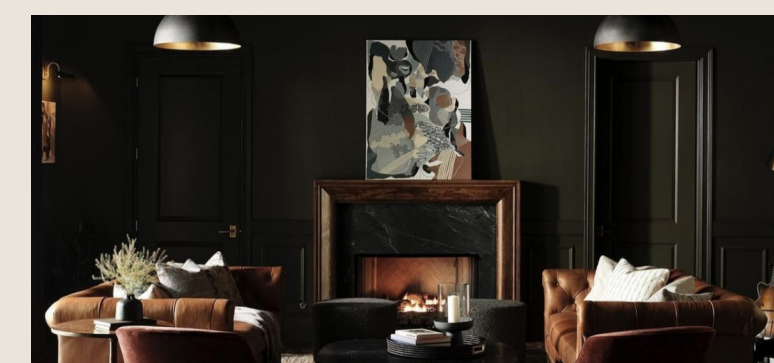
16 BAR



22 LOUNGE



28 LIVING ROOM



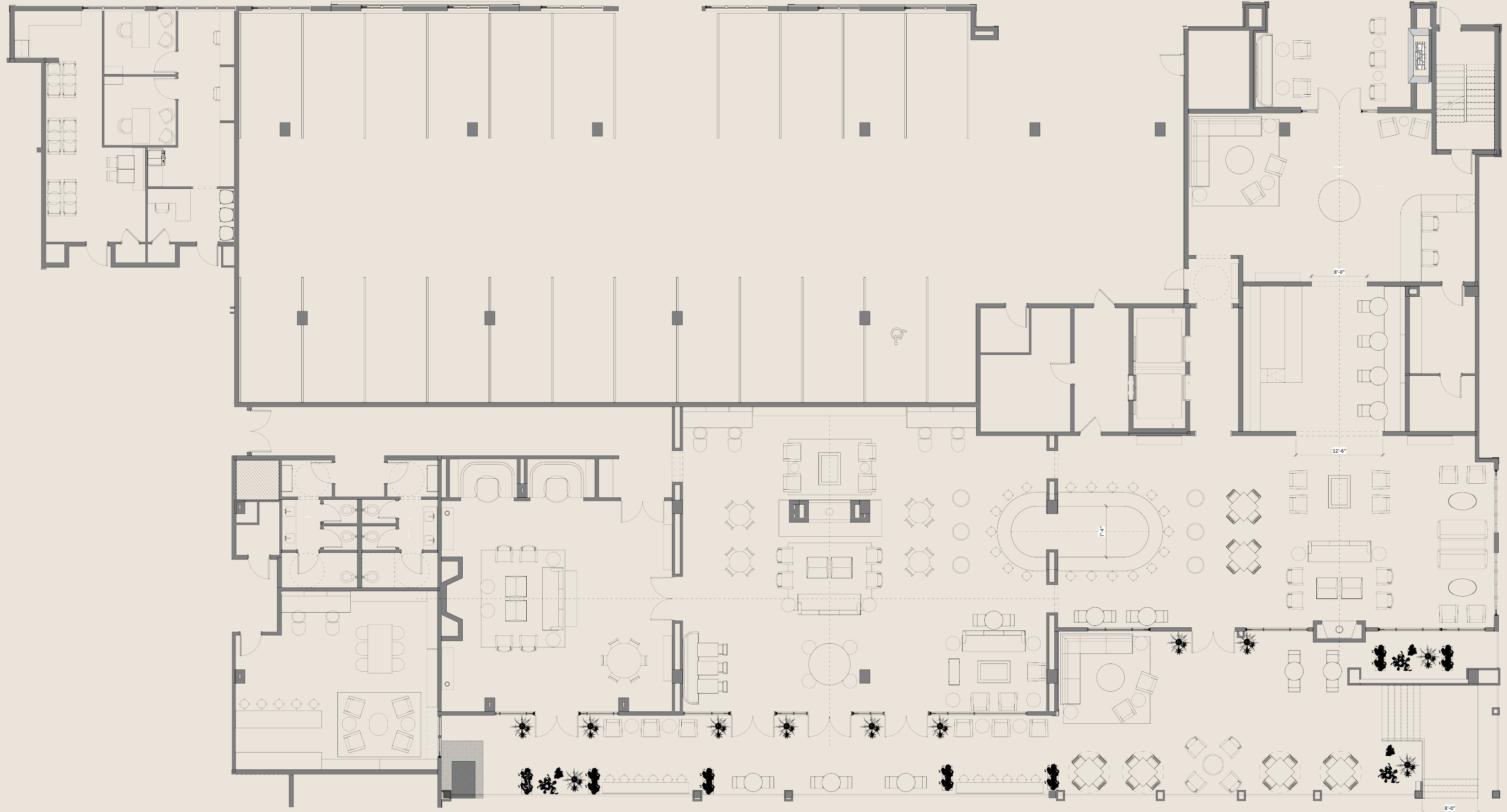
34 RESIDENT'S CLUB



PUBLIC SPACE

X

06 • NOVEMBER 17 2025





LOBBY

LOBBY

X

10 • NOVEMBER 17 2025



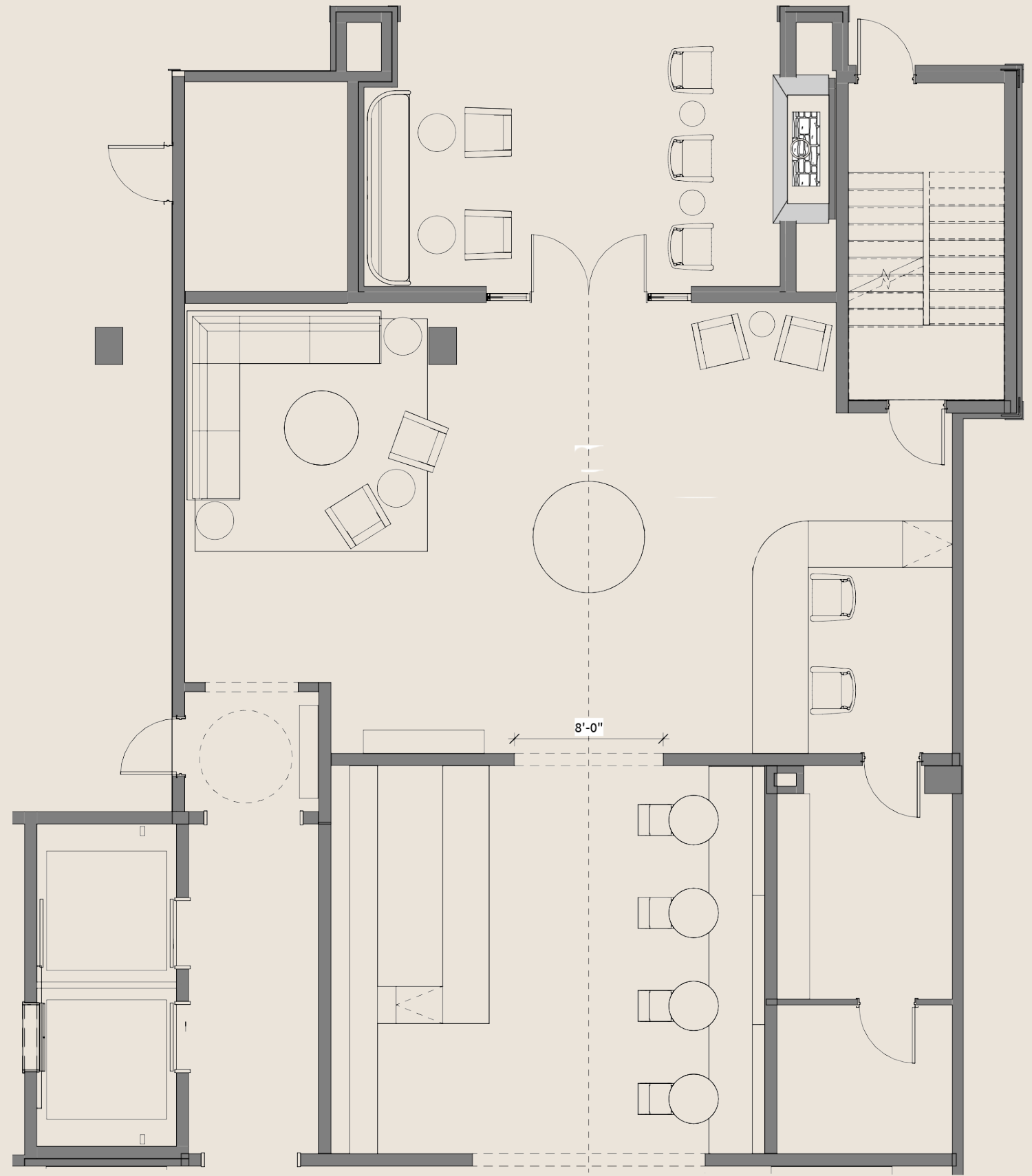
CAFE

X

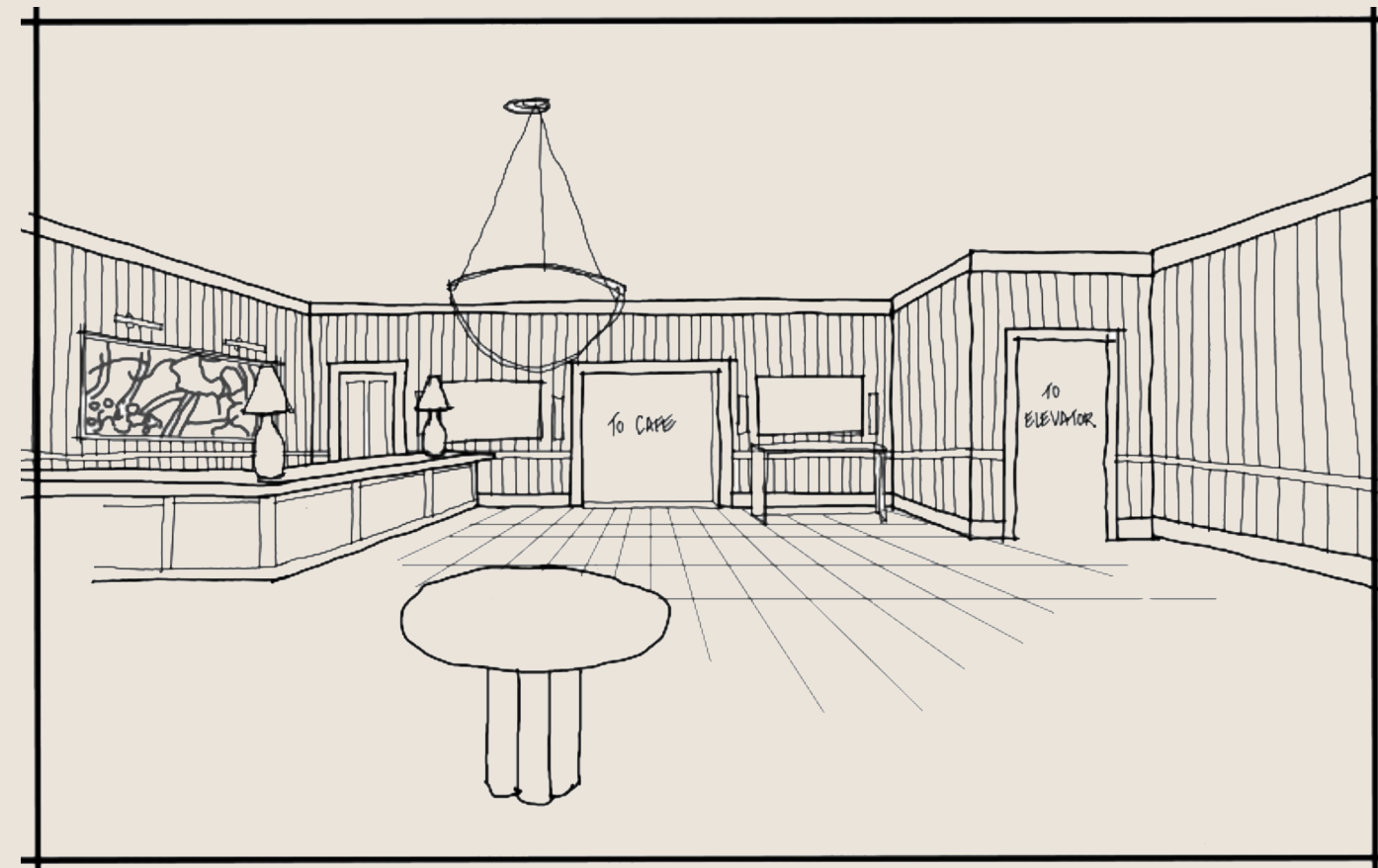


LOBBY

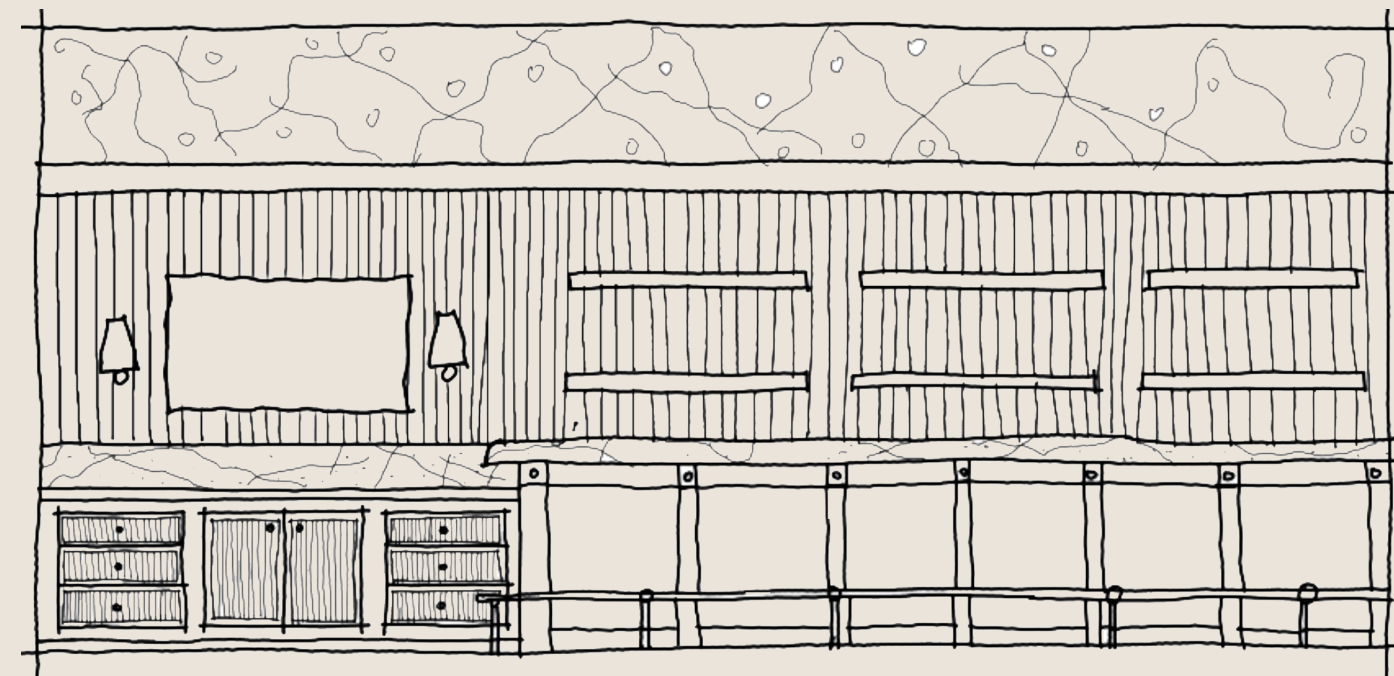
X



FURNITURE PLAN



LOBBY VIEW

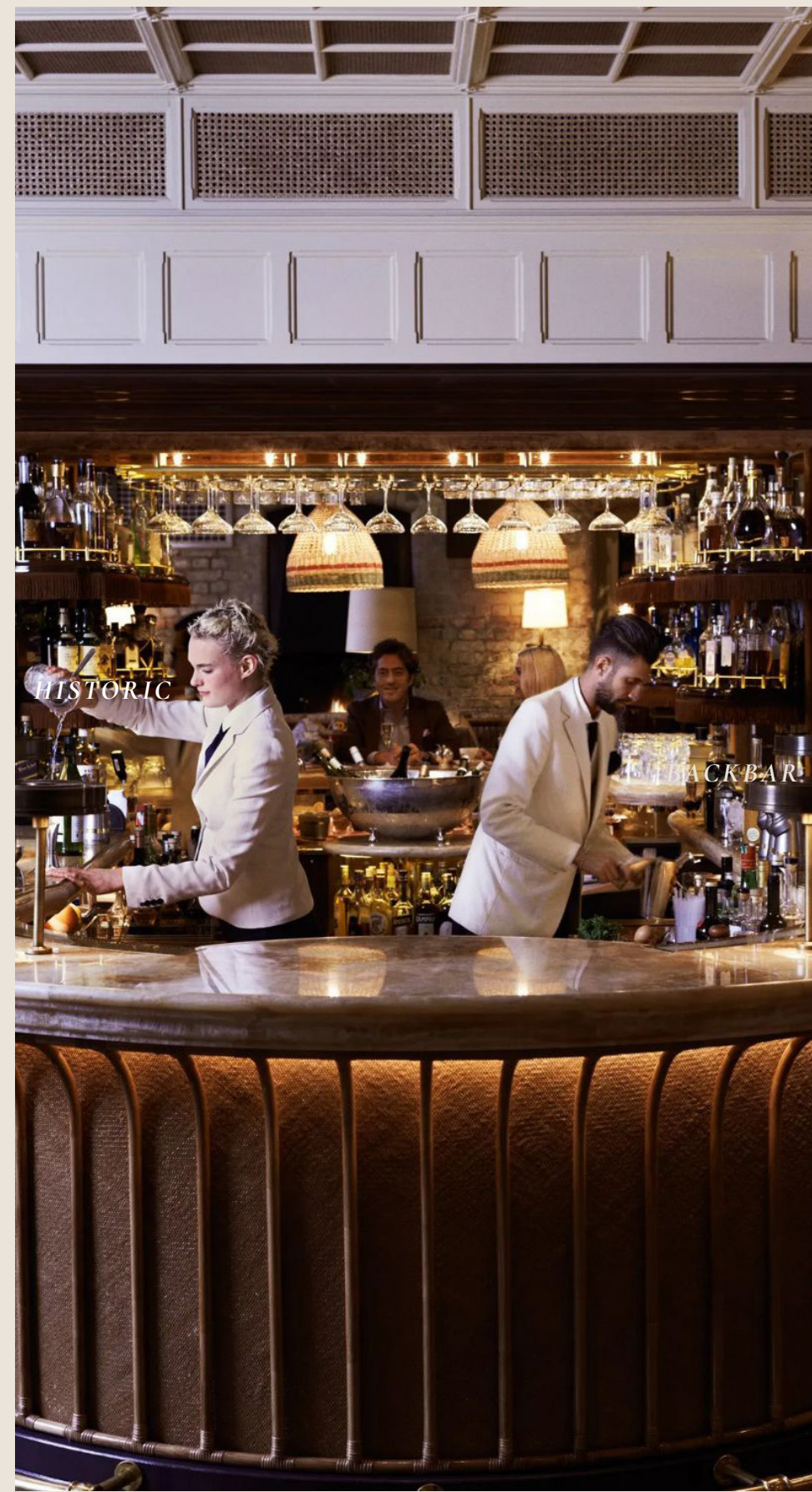


CAFE ELEVATION

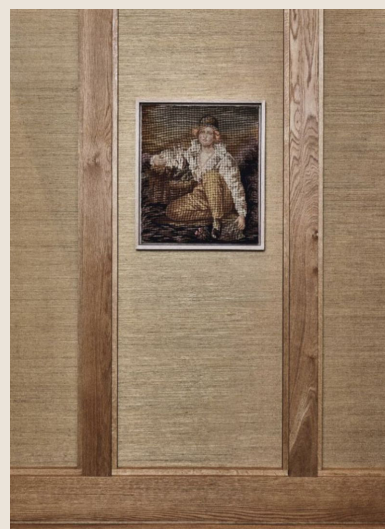


BAR

BAR

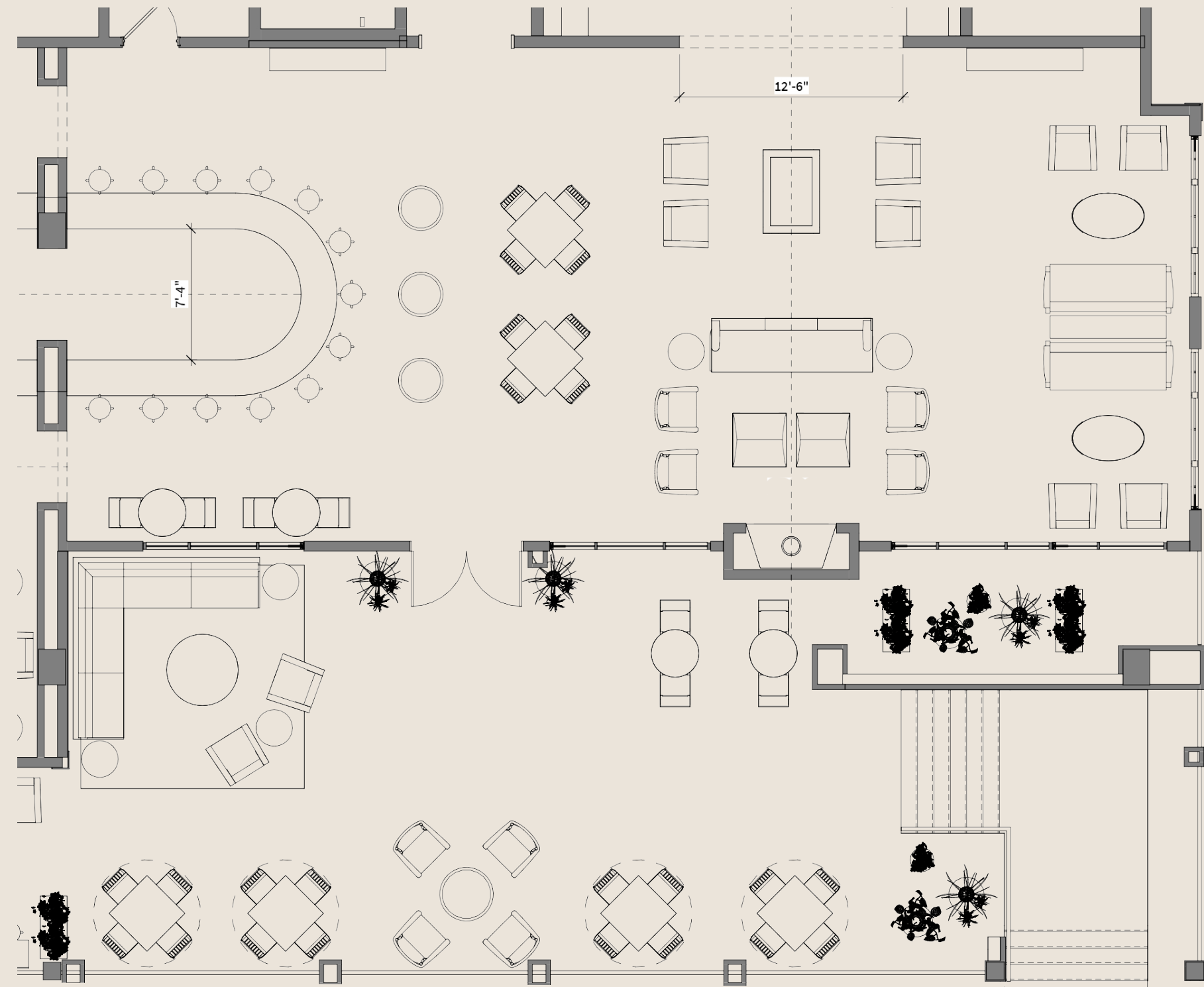


X

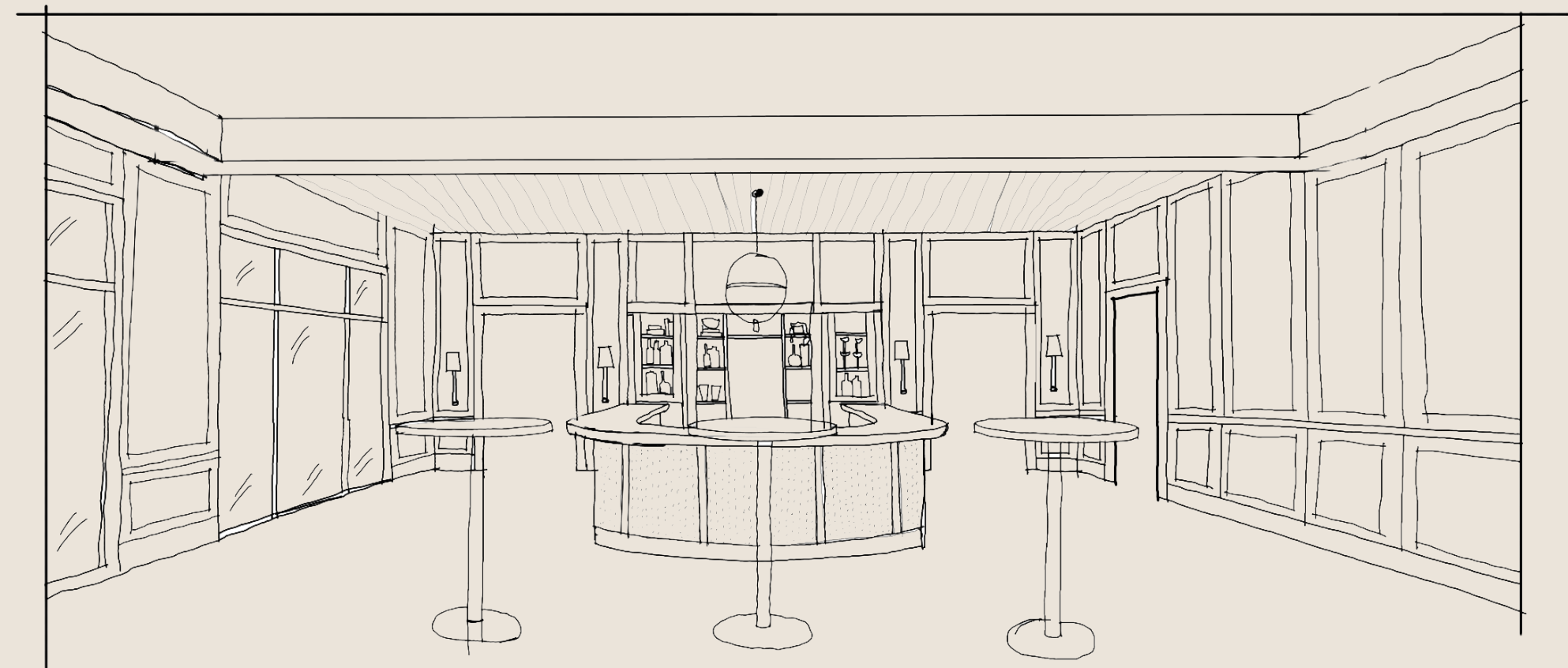


BAR

X



FURNITURE PLAN



BAR VIEW

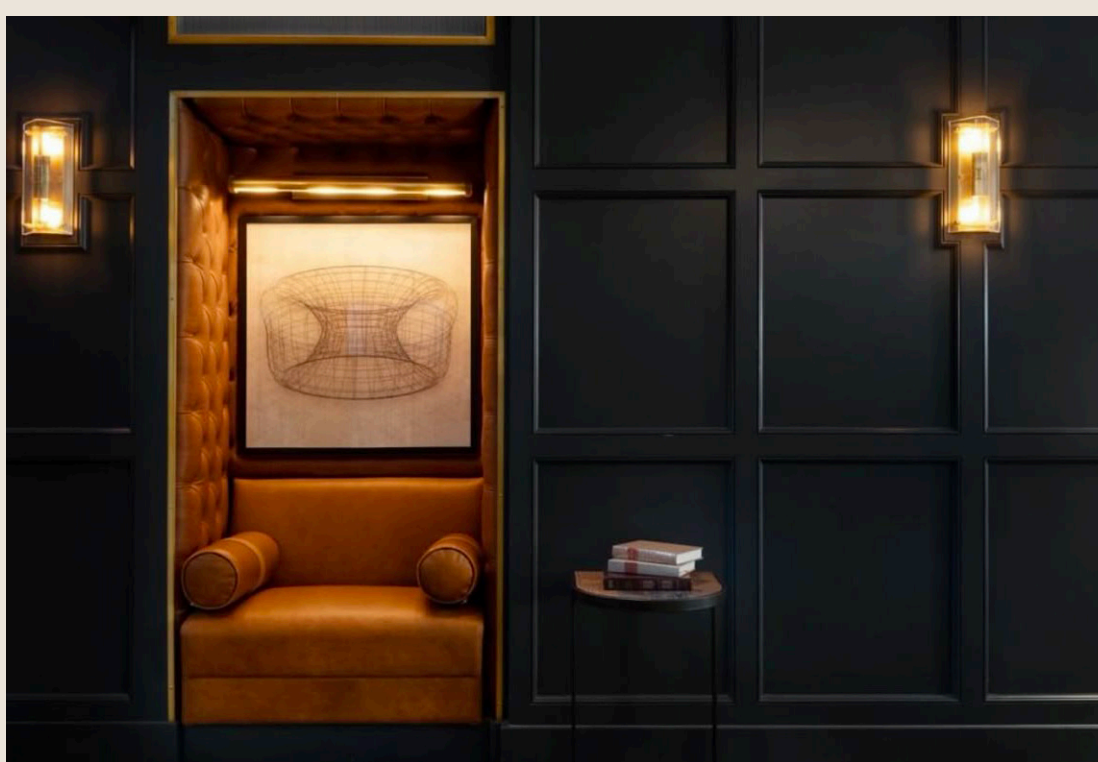
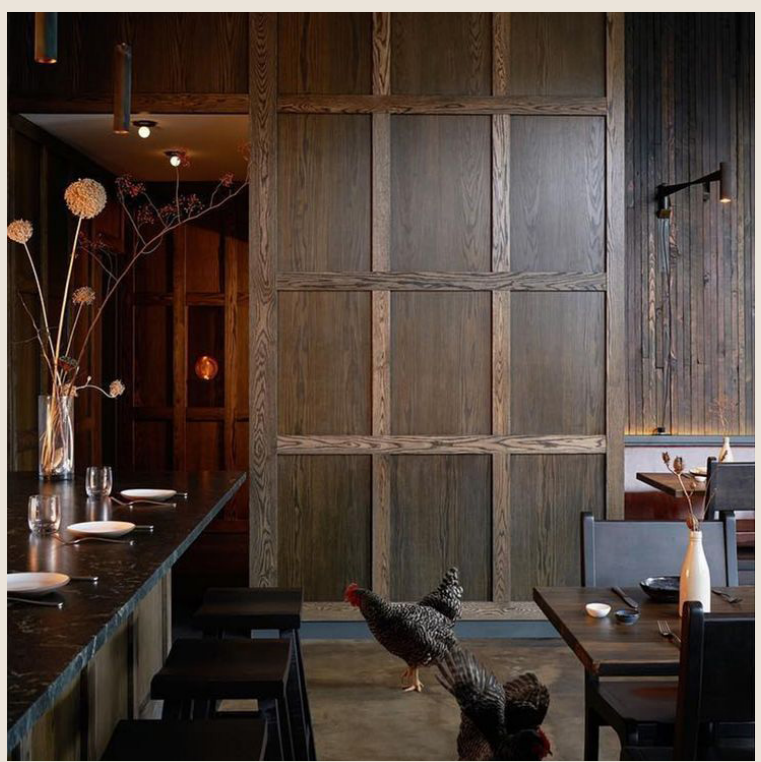


LOUNGE

LOUNGE



X

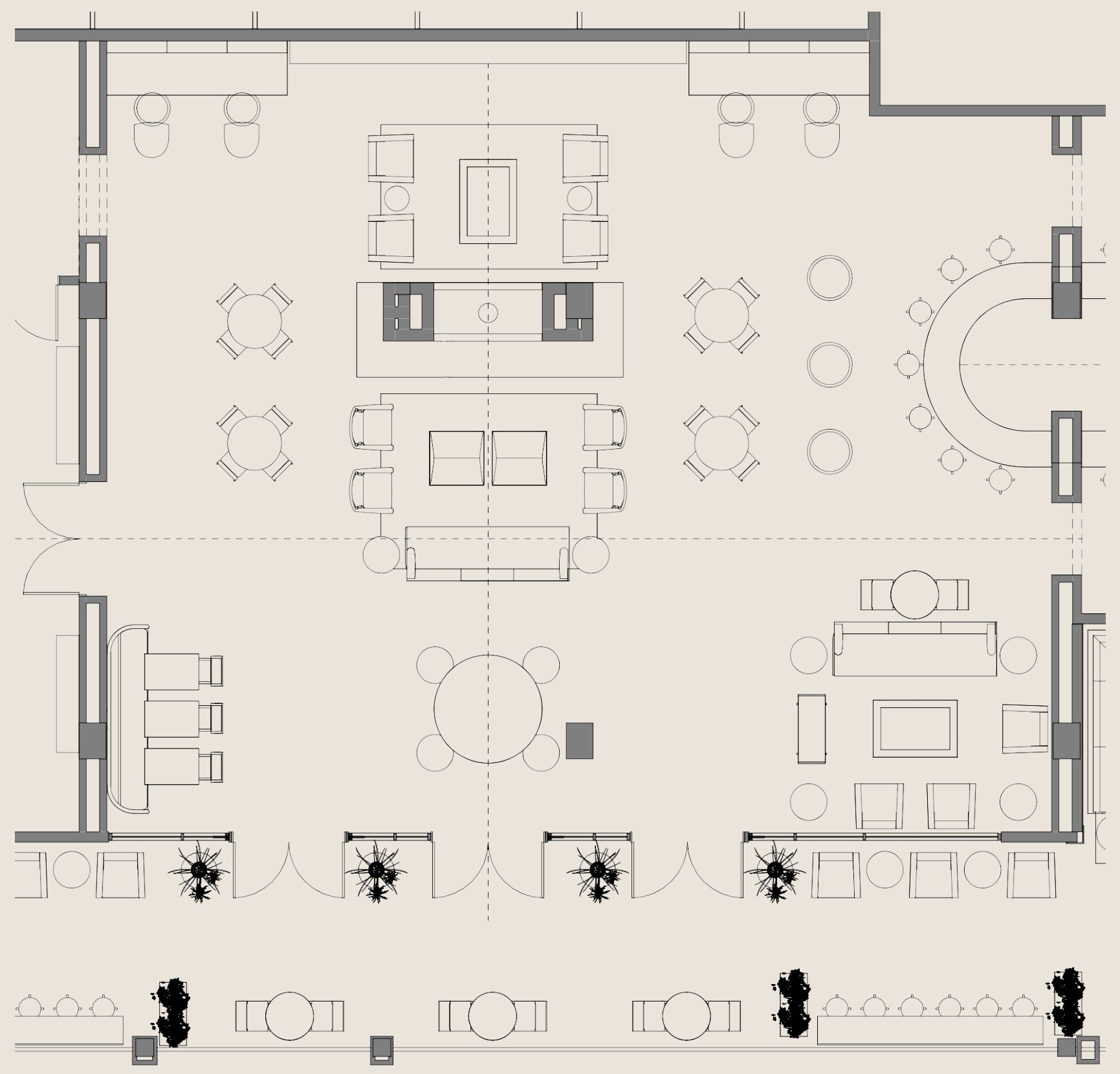


24 • NOVEMBER 17 2025

FIREPLACE

LOUNGE

X



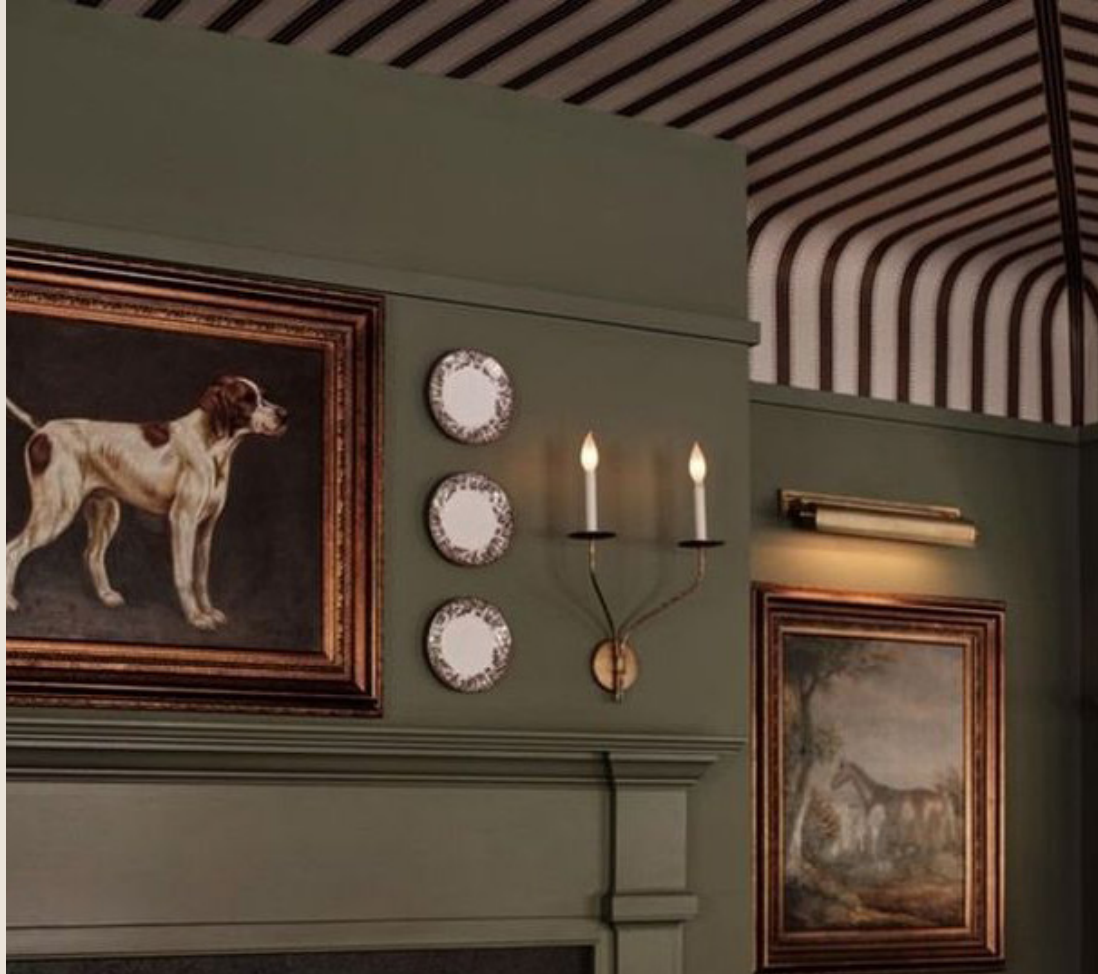
FURNITURE PLAN



LIVING ROOM

LIVING ROOM

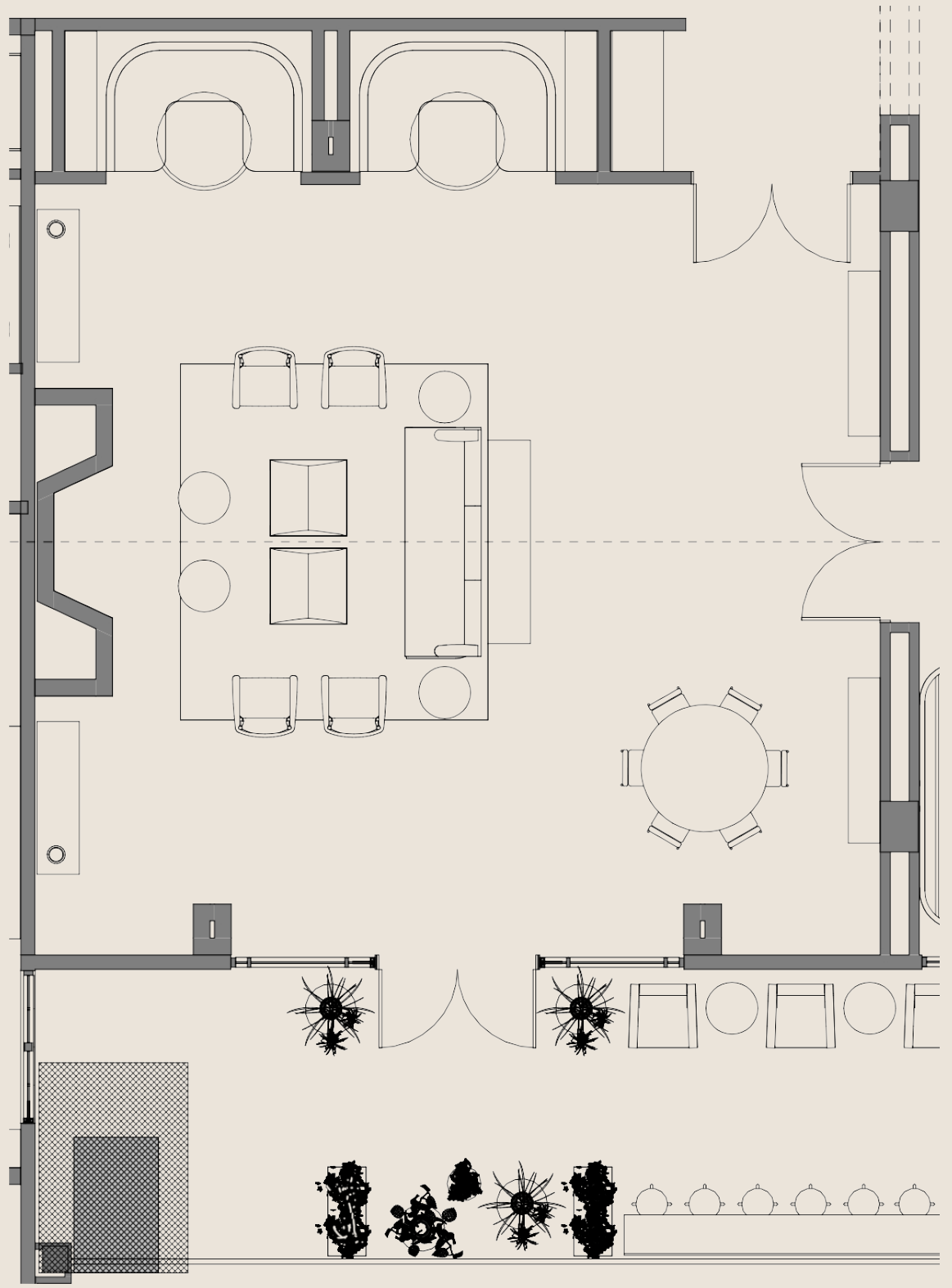
X



LIVING ROOM

X

32 • NOVEMBER 17 2025



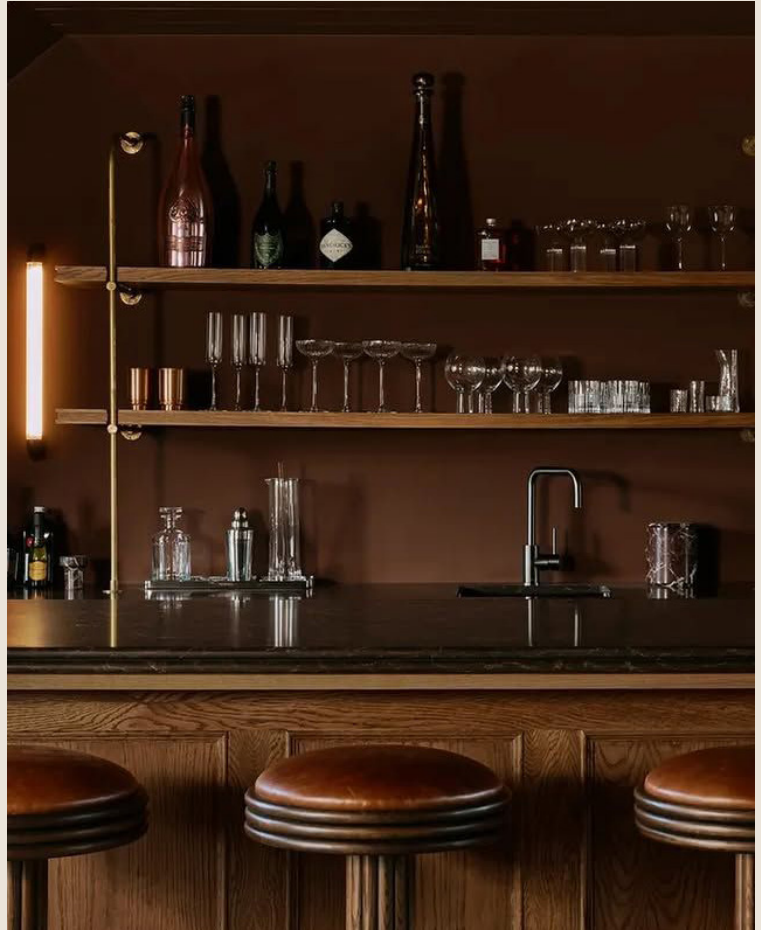
FURNITURE PLAN

The image features a close-up, slightly blurred view of a stone wall. The stones are rectangular and laid in a regular pattern, with visible mortar joints. The overall color palette is muted, consisting of various shades of grey, taupe, and light brown. The lighting is soft and even, highlighting the textures of the stone. In the center of the image, the words "RESIDENT'S CLUB" are written in a clean, white, serif typeface. The text is centered both horizontally and vertically, creating a balanced and professional appearance.

RESIDENT'S CLUB

RESIDENT'S CLUB

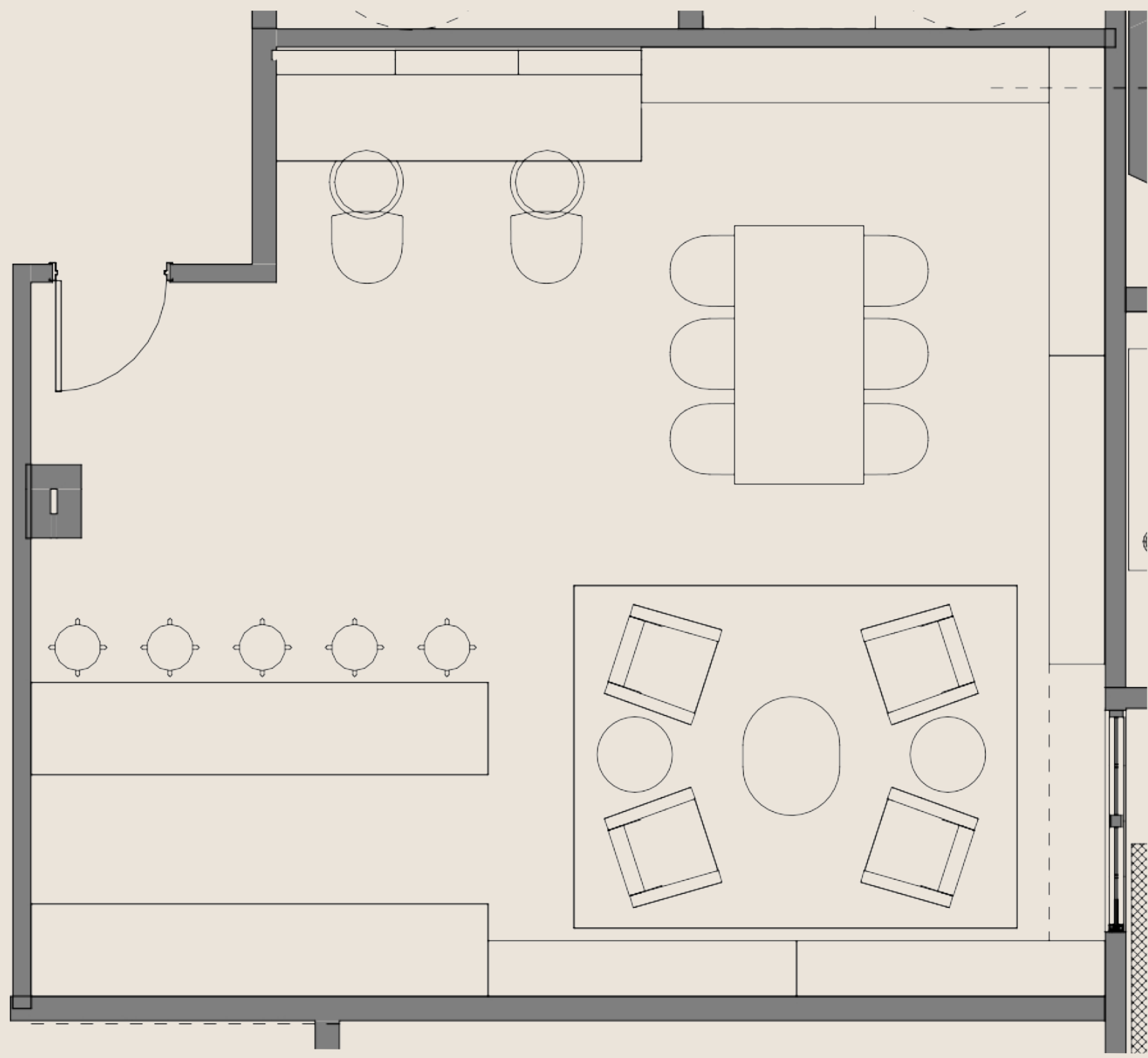
X



RESIDENT'S CLUB

X

38 • NOVEMBER 17 2025



FURNITURE PLAN

42
DESIGN GUIDE

GUESTROOMS
&
CORRIDORS

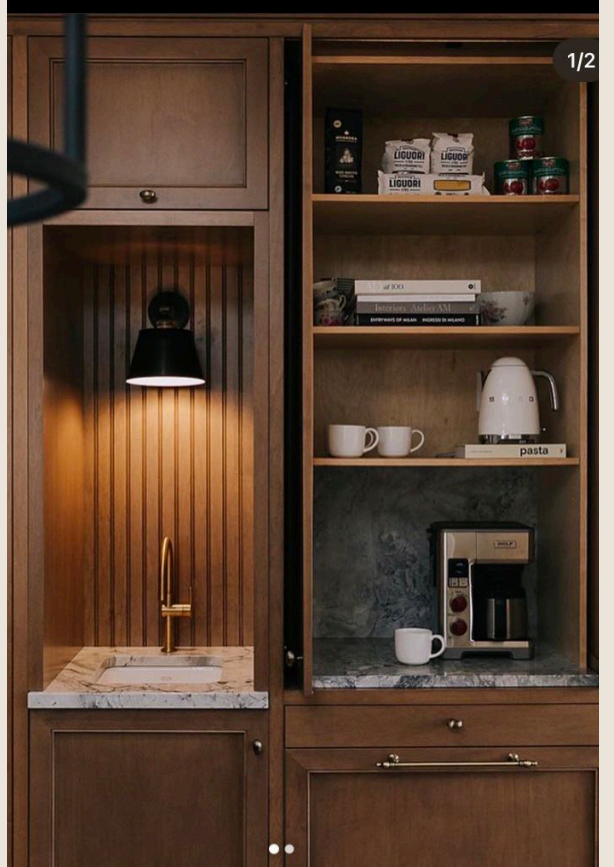
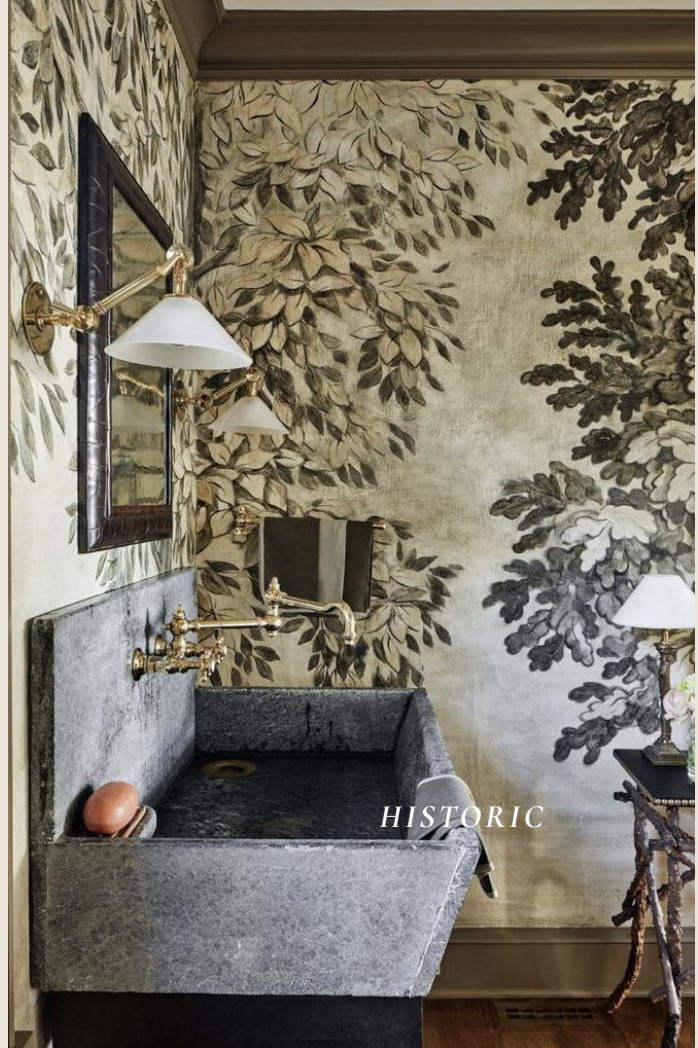
44
ROOM LAYOUTS

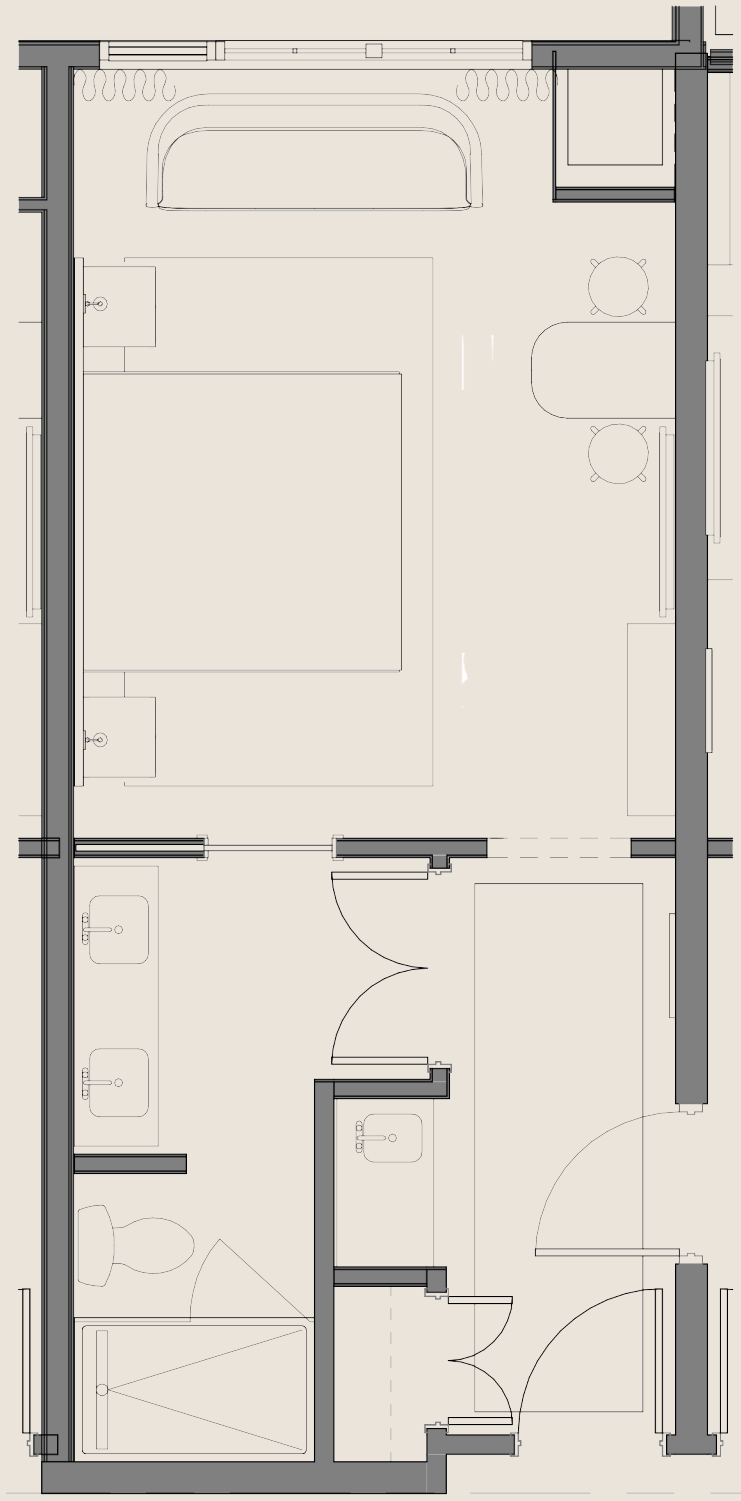
52
APARTMENT
LAYOUTS



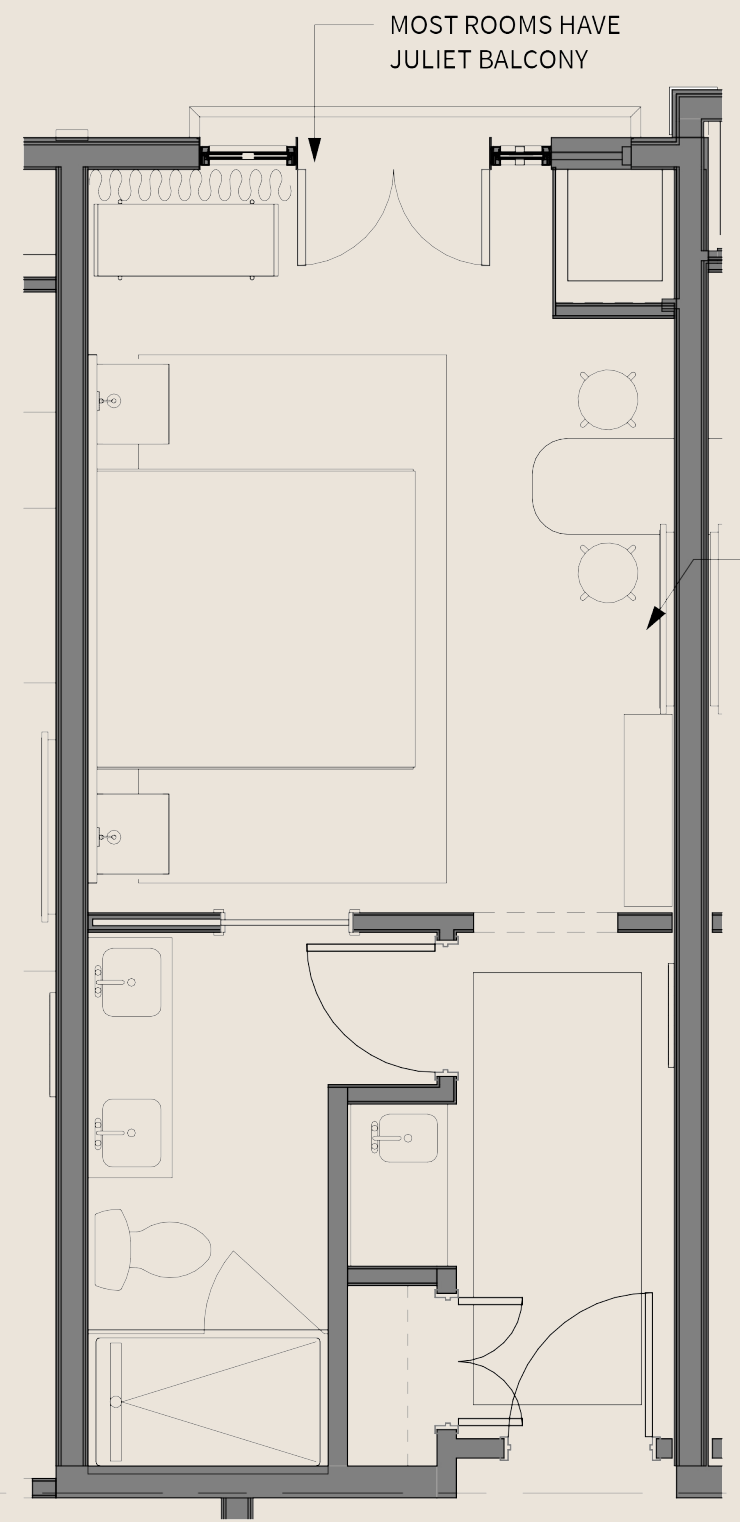
GUESTROOMS

X

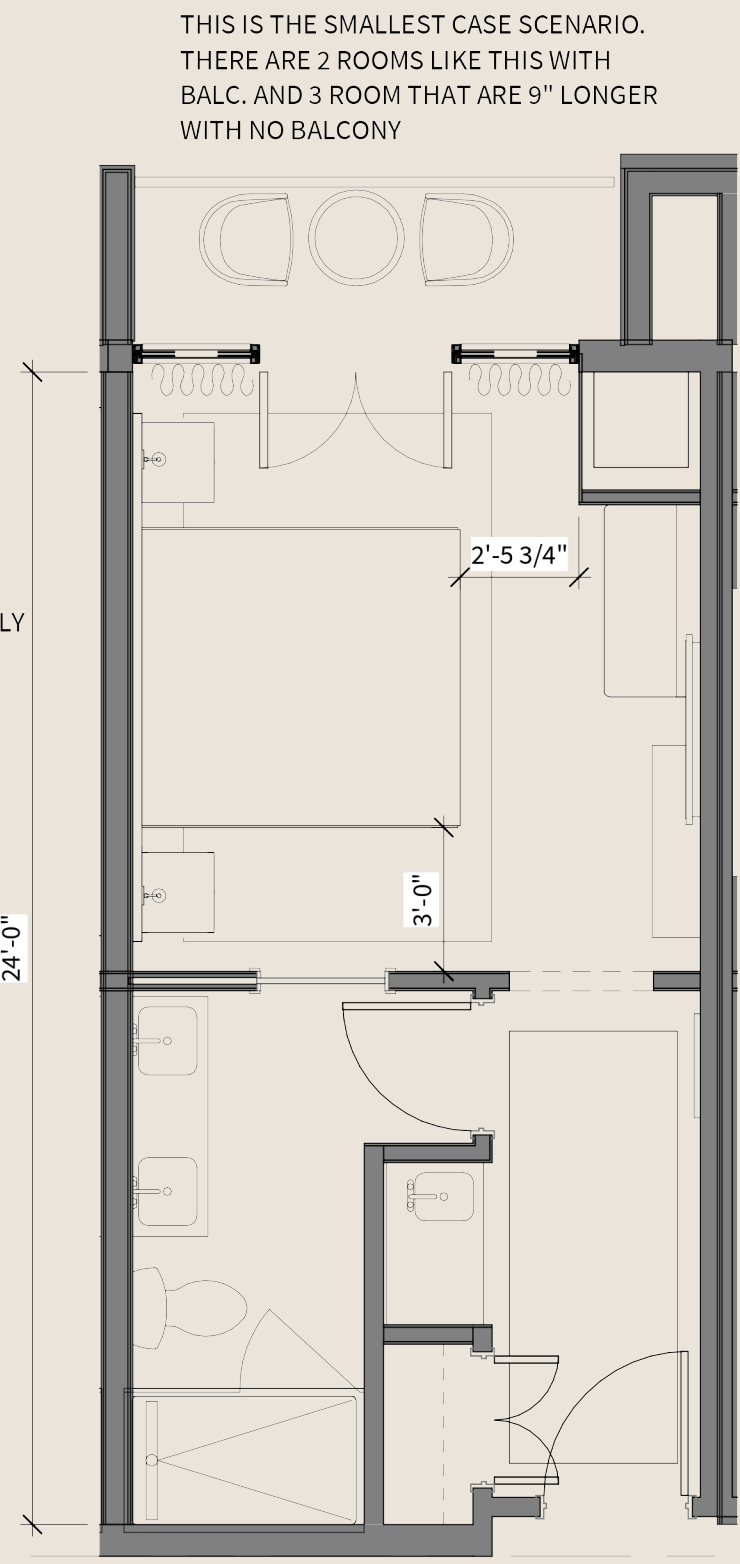




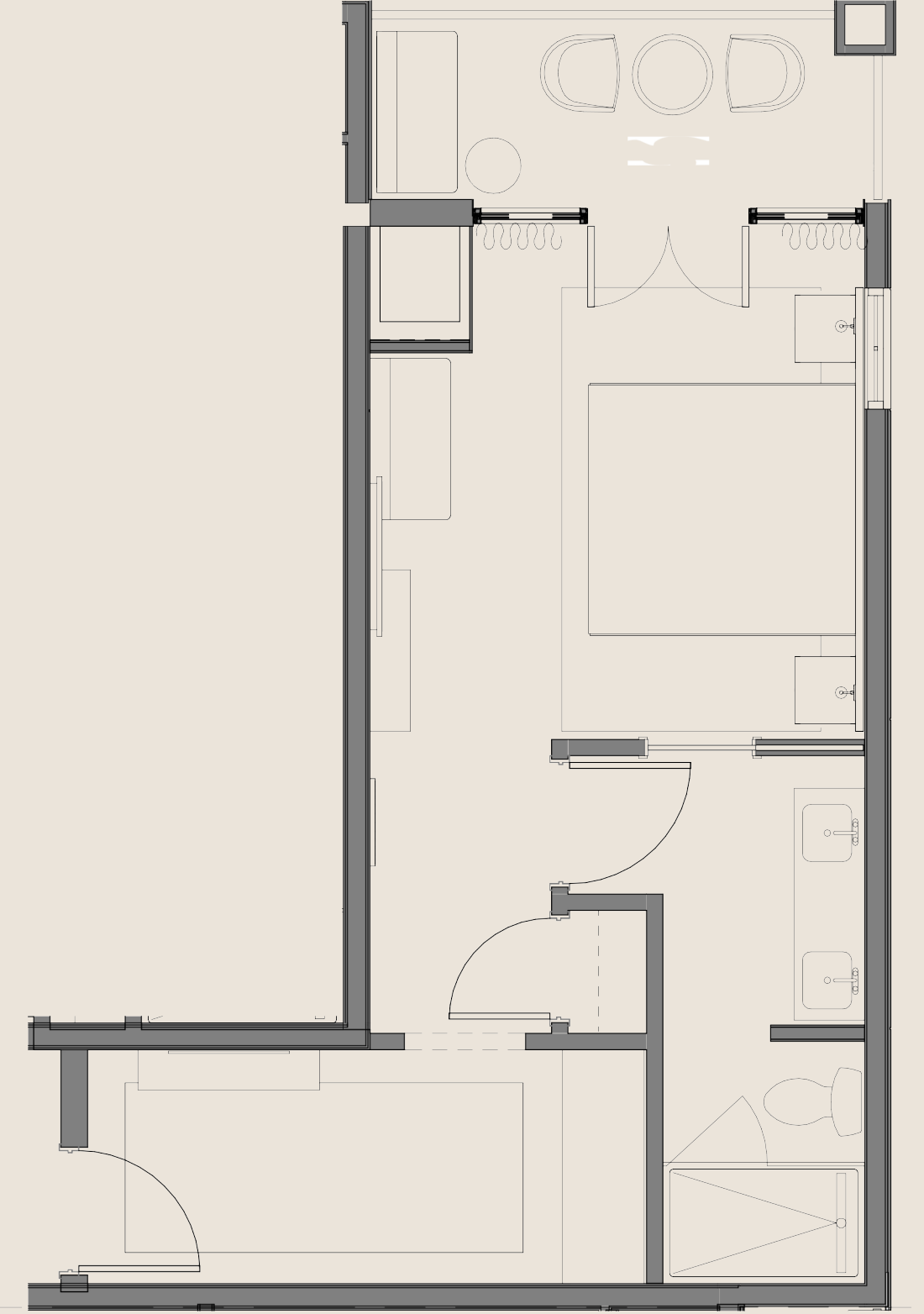
KING A



KING B



KING C

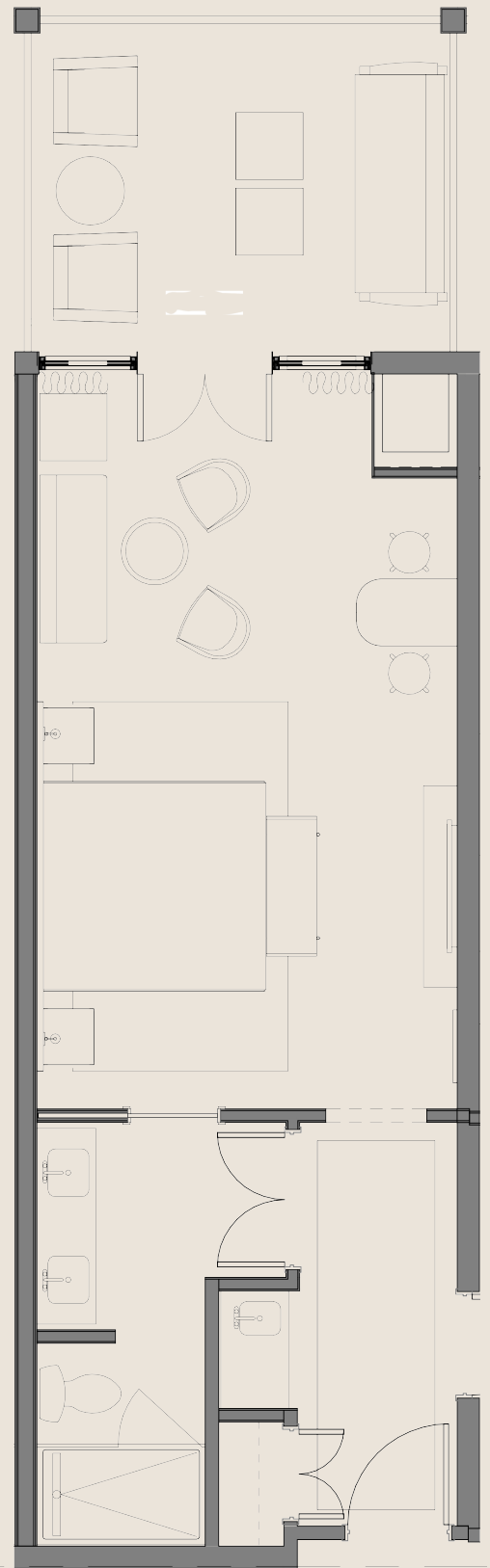


KING D

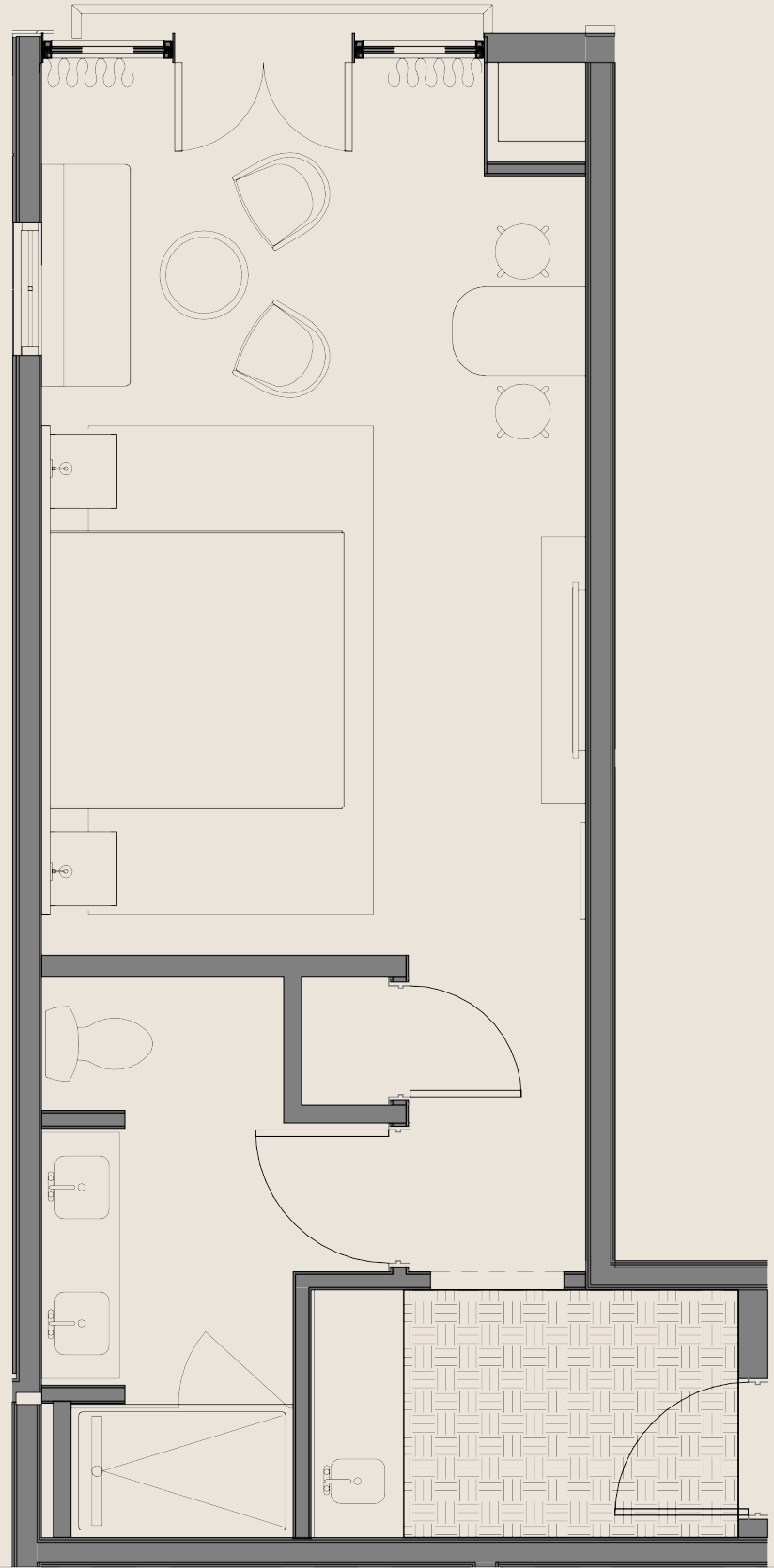
GUESTROOMS

X

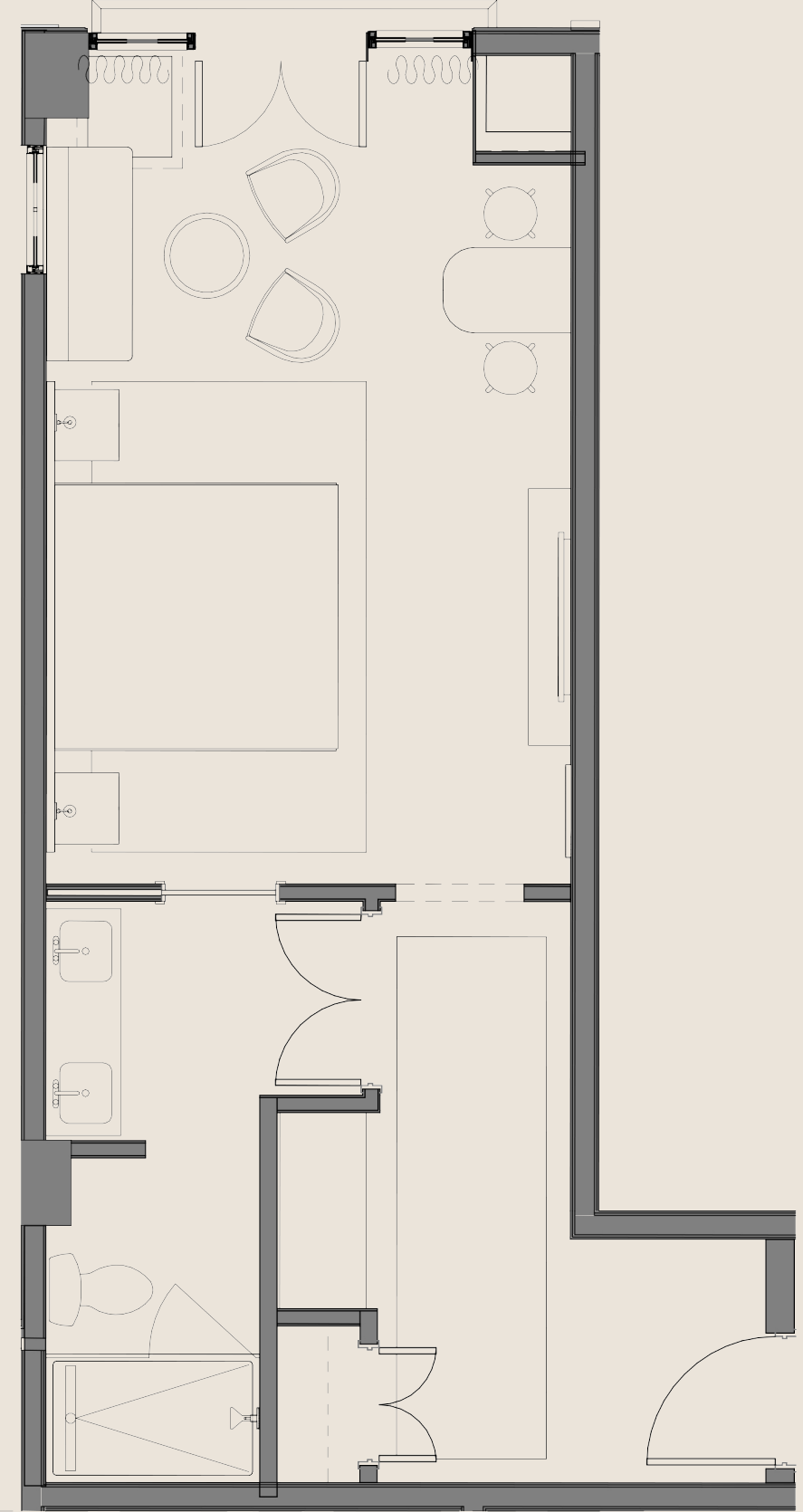
46 • NOVEMBER 17 2025



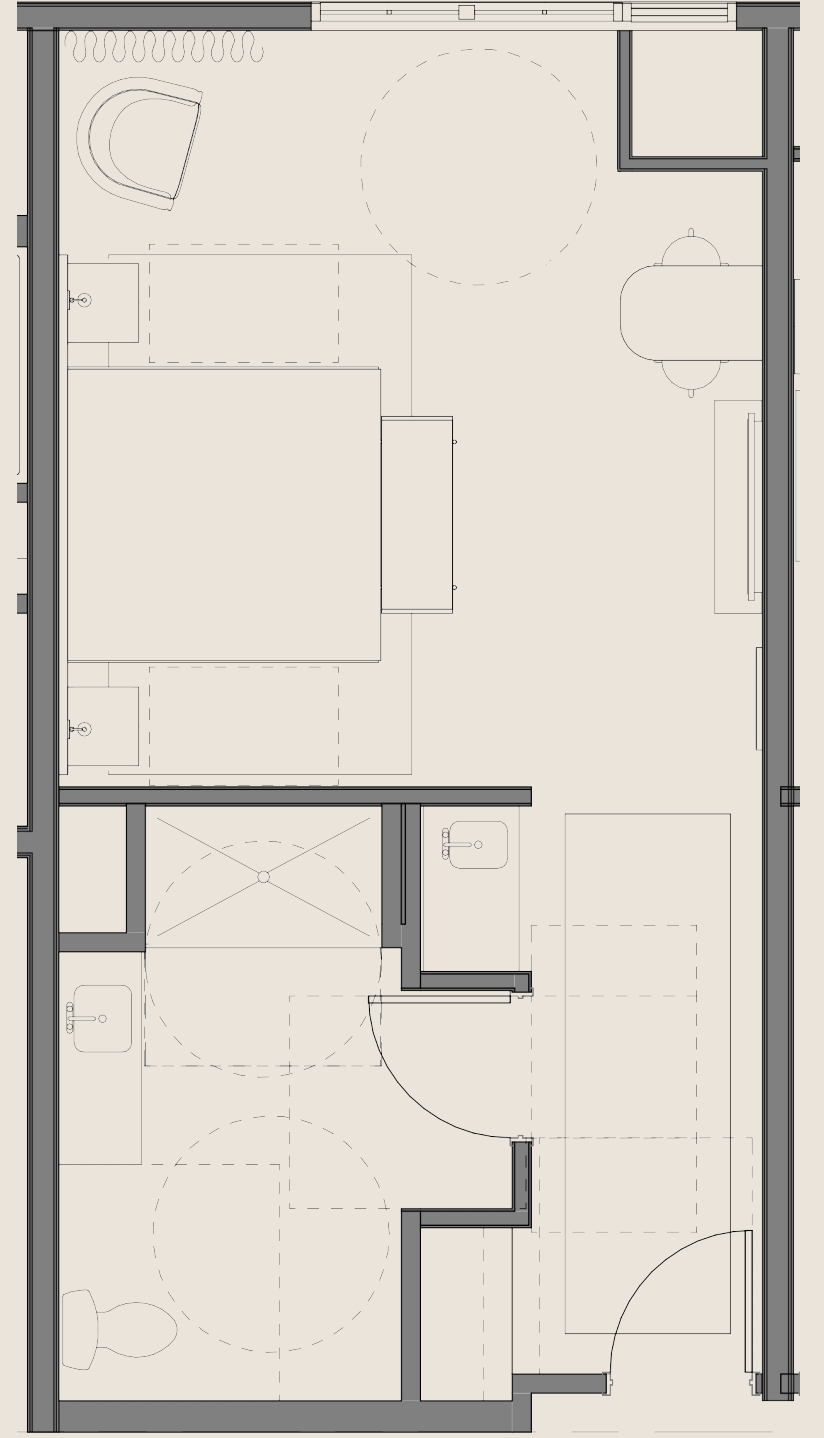
KING E



KING F



KING F-ALT

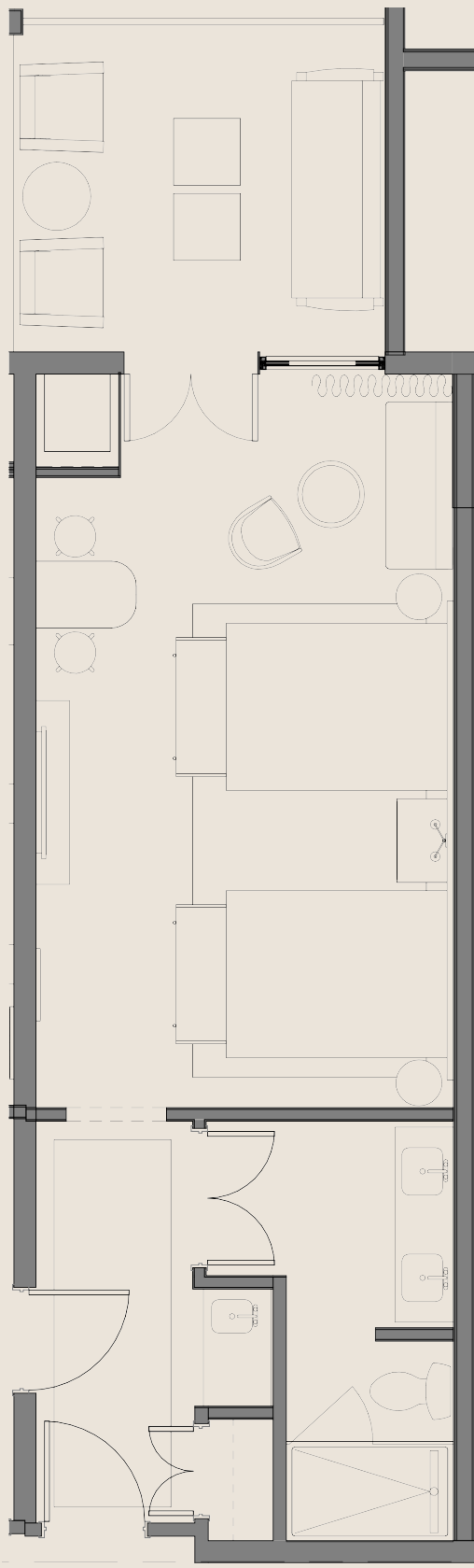


KING A-ADA

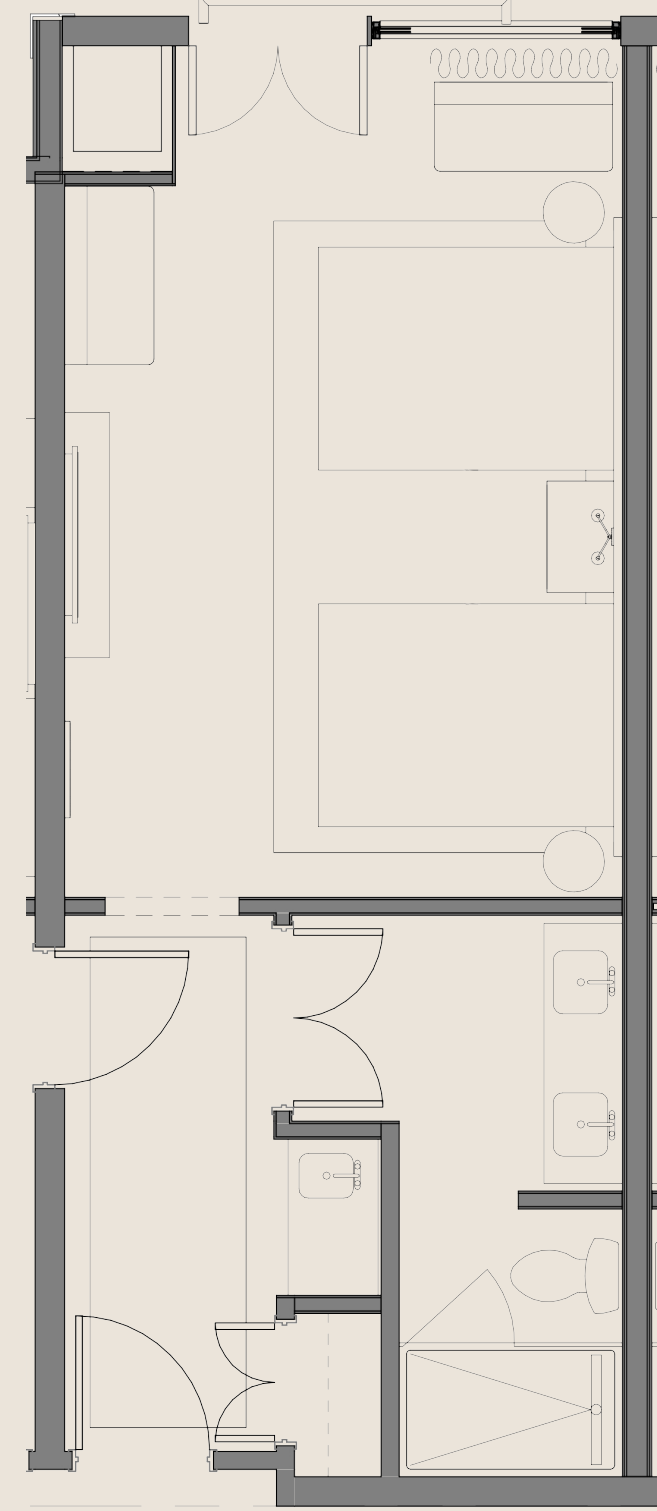
GUESTROOMS

X

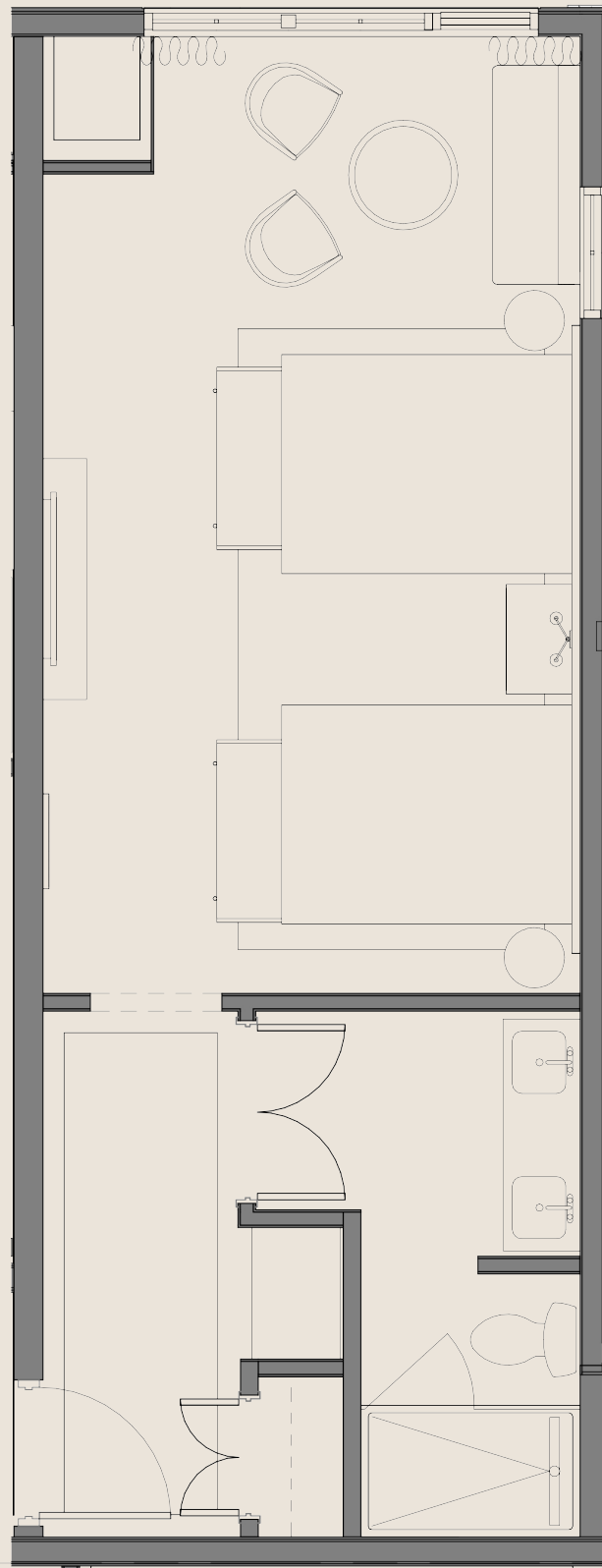
48 • NOVEMBER 17 2025



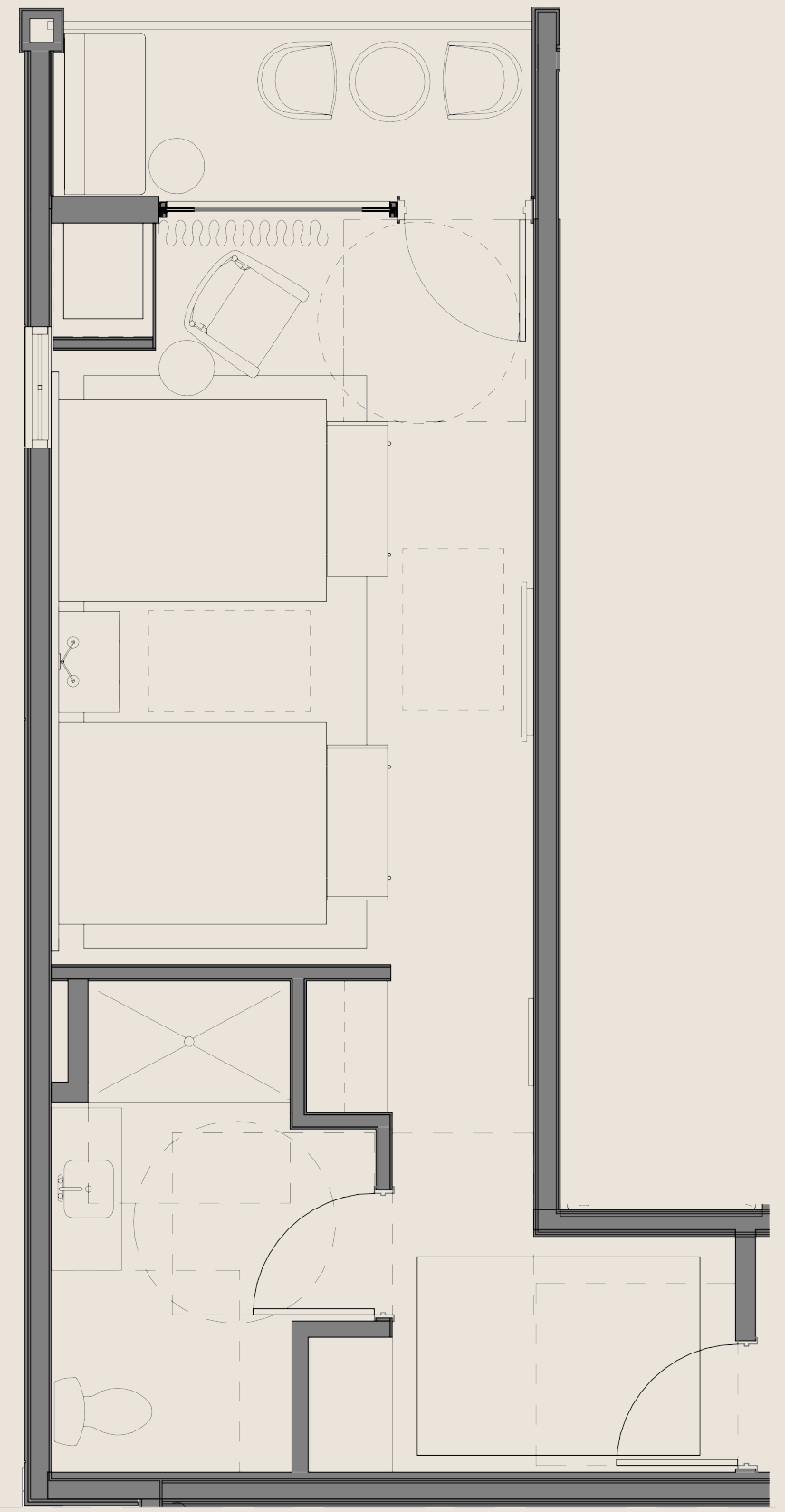
QUEEN QUEEN A



QUEEN QUEEN B



QUEEN QUEEN C

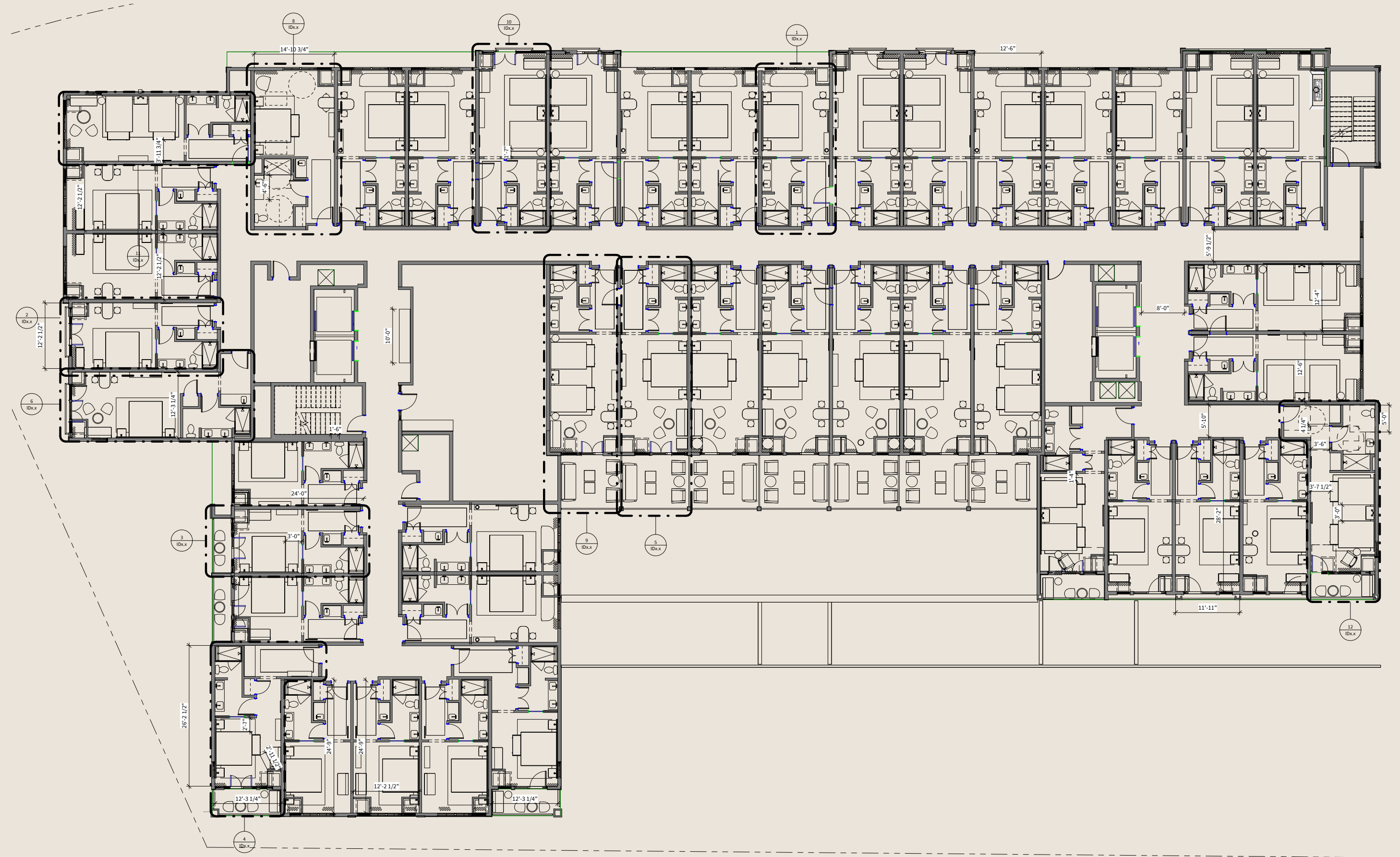


QUEEN QUEEN ADA

GUESTROOMS

X

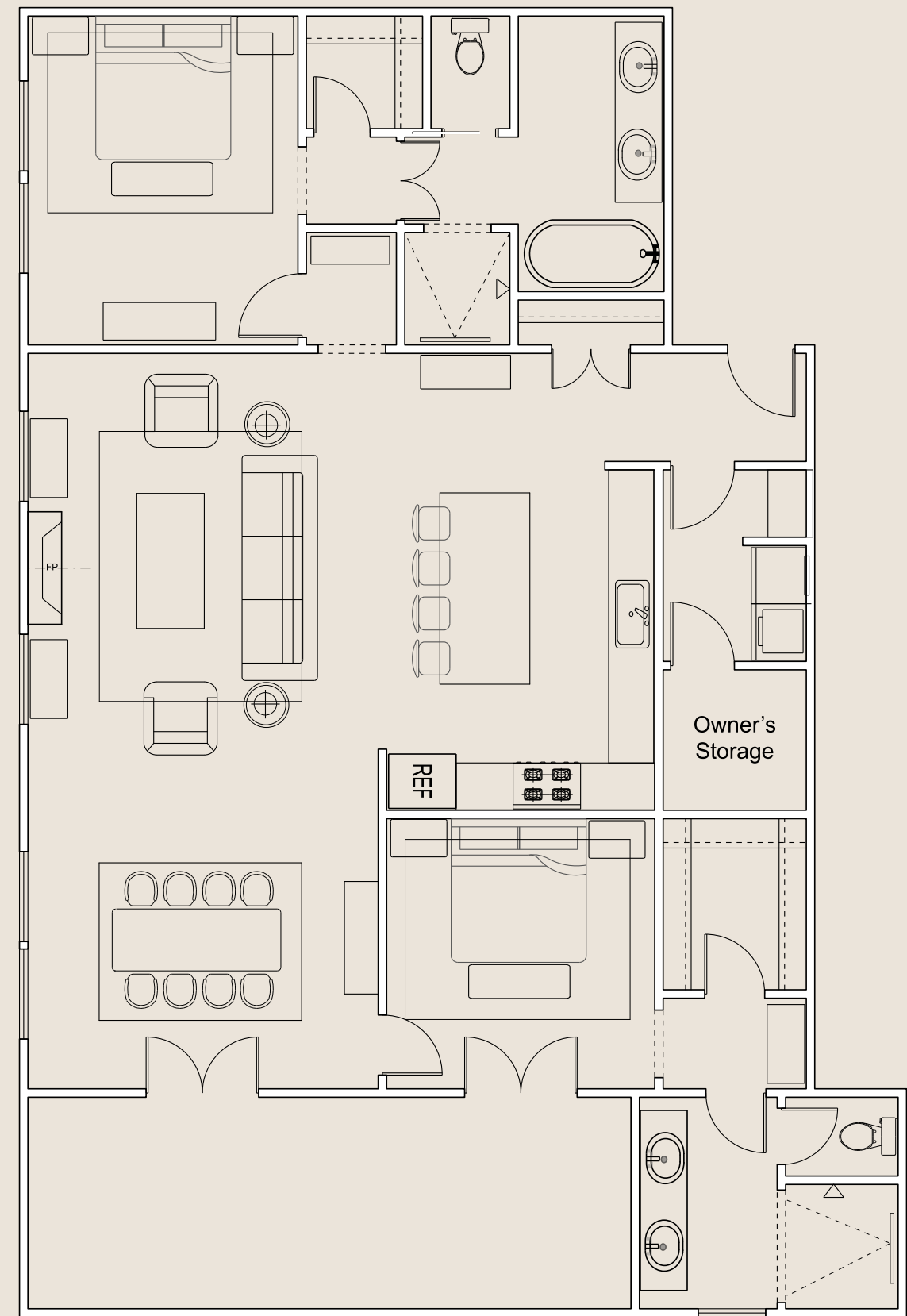
50 • NOVEMBER 17 2025



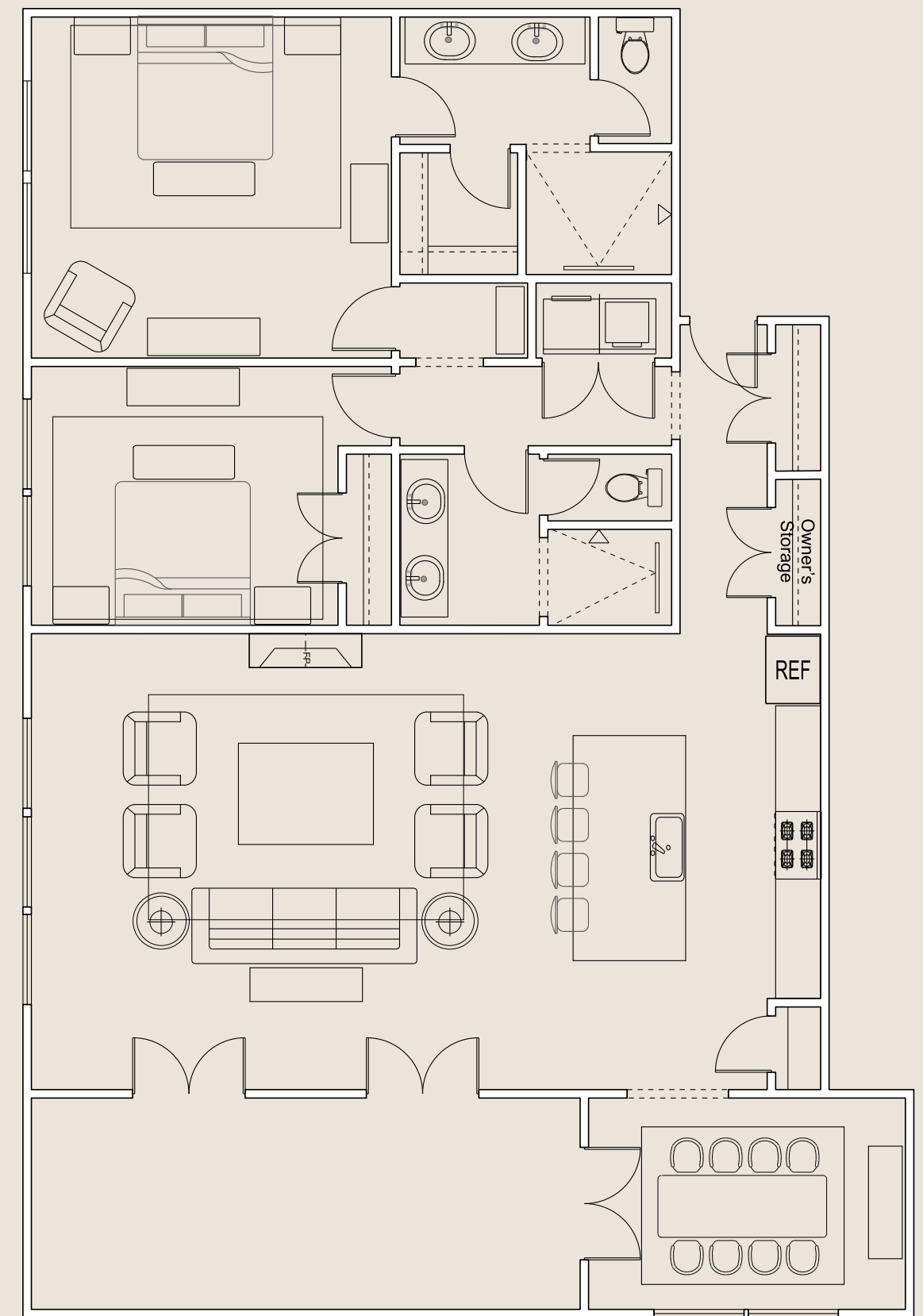
APARTMENTS

X

52 • NOVEMBER 17 2025



APARTMENT A OPTION 1



APARTMENT A OPTION 2



DESIGNED BY

PIXEL

DESIGN
CO.